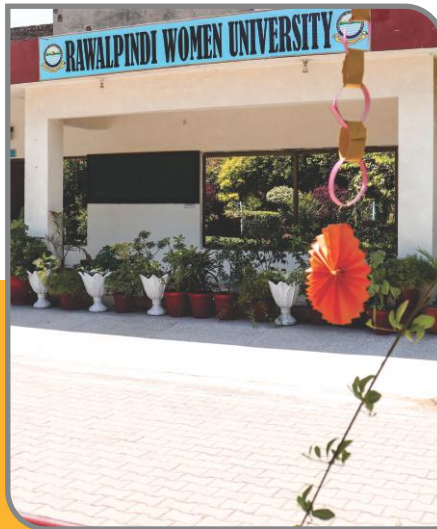
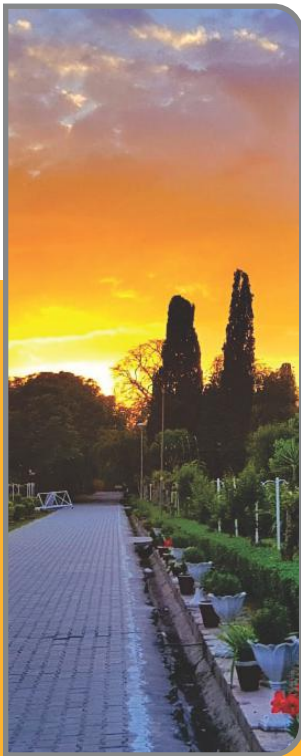


RAWALPINDI WOMEN UNIVERSITY



ANNUAL REPORT

2021-22

📞 051-9290842

📍 6th Road, Satellite Town,
Rawalpindi, Punjab, Pakistan

🌐 <http://www.rwu.edu.pk>



ANNUAL REPORT 2021-22

Compiled by:

**Quality Enhancement Cell
Rawalpindi Women University**

CONTENTS

03

Chancellor's Message

05Vice Chancellor's
Message**07**

Executive Summary

09

About us

10

Vision & Mission

11Vice Chancellor's
Activities**18**Academic
Activities**21**Department Wise
Students**24**Governance
Structure**30**Research &
Development**47**Technological
Infrastructure**48**

Library

49Finance at
a Glance**51**Events and Extra
Co-curricular Activities

بِسْمِ اللَّهِ الرَّحْمَنِ الرَّحِيمِ

MUHAMMAD BALIGH UR REHMAN

GOVERNOR PUNJAB CHANCELLOR

I am delighted to congratulate the RWU for attaining the well-respected seat of teaching and learning on the horizon of Higher Education Institutes of women in Pakistan, in leading the way with an objective to empower women. It is my pleasure to recognize this exceptional institute for its commitment to ensuring that our future generation of women is fully equipped to become future leaders of the world and agents of change in their communities by gaining an understanding and appreciation of the world.



The university's mission to equip women through knowledge, skills and confidence is something that we should all strive for. I believe that an educated woman is a great asset to any society.

Furthermore, In my opinion, access to higher education provides greater economic stability, allowing more members of the female population to be independent and financially secure while making a significant contribution within their respective fields. This allows us as a society and nation to benefit from an increased level of productivity and innovation due to these educated individuals being active participants in our economy.

As a Chancellor, I appreciate RWU's commitment towards achieving women empowerment through education and I would like to applaud Prof. Dr. Anila Kamal, Vice Chancellor for leading the young women and paving the way of success. I would also like to express my gratitude for the untiring efforts of the faculty and administration toward their commitment for the development of RWU. I look forward with excitement at what our student population will achieve once they have graduated from this remarkable institution.

CHANCELLOR MESSAGE

VICE CHANCELLOR'S MESSAGE



Prof. Dr. Anila Kamal
Vice Chancellor

Rawalpindi Women University has maintained an enviable record of academic distinction since its collegiate days. The university was established with the objective of producing competent professional women who could contribute to the growth of a flourishing community. I took this responsibility and designed its strategy to become a provider of young professionals in leading sectors of Arts and Humanities, Sciences, Social Sciences, IT/Computer Science, and Business Administration for career-oriented women who may positively impact the society.

The quality of an academic system is determined by the curriculum, faculty, and teaching environment. Any compromise on these important features will undermine academic excellence. Throughout the year, emphasis was placed on the meritorious appointment of qualified faculty, staff, and administration. In addition, we are devoted to exposing our students to a multifaith environment in order to cultivate their personality and interpersonal skills.

Rawalpindi Women University is offering 14 degree programs in the Faculty of Science, Humanities and Social Sciences. In this connection, the University tries to foster productive relationships with related R&D institutions and industries. In addition, to ensure quality education, the university evaluates each degree program periodically using the established criteria and standards specified by the Higher Education Commission. The technological infrastructure has a significant impact on all parts of university life, including vital business systems, Classroom learning tools and research activities; therefore, a learning Management System was implemented during the year, which has not only aided in the smooth installation of the system but also established an automated mechanism for monitoring and evaluating the system.

Our strategy for addressing diversity and shifting expectations for higher education is to adopt a more student-centered approach to learning and teaching, embrace flexible learning paths, and acknowledge competencies acquired outside of formal curricula.

We are delighted to share some of our accomplishments with you in our Annual Report of the year 2021-2022.



EXECUTIVE SUMMARY

Rawalpindi Women University (RWU) is a higher education institution that was established in April 2019 by upgrading the historical Government Postgraduate College for Women in Rawalpindi, Pakistan. The university is dedicated to providing quality education to women and empowering them with the knowledge and skills to become leaders in their respective fields.

During the year 2021-2022, RWU offered under graduate degrees in 14 departments. It also houses one of the oldest art and design colleges in Pakistan. These programs cater to a wide range of interests and help students gain the necessary knowledge and skills required for their chosen fields. Currently, the university has a total of 2,758 students enrolled in various disciplines.

RWU provides a favorable learning environment for its students by offering modern facilities, equipment, and a dedicated faculty. Additionally, the university offers various co-curricular activities to enhance the overall learning experience of its students. RWU also encourages research and innovation among its faculty and students, with the aim of addressing societal challenges and contributing to the development of the country. The institution is increasing its capacity by adding more faculty and administrative personnel. During the year, technological infrastructures was enhanced with the addition of new facilities, PERN, the Digital Library, a smart classroom and a Learning Management System.

EXECUTIVE SUMMARY



Academic
Departments
14



Faculty
members
208



Students
enrollment
2758



Library
Books
32,000



Girls Hostel
800 Beds
capacity



Sports ground
&
Gymnasium



Free Wifi
Facility



Daycare
Center



Medical and
Health
Care centre



Women
Development
Center



E-Rozgar



Smart
Class Room

United Nations
Academic Impact



ABOUT US!

Rawalpindi Women University has a rich history dating back to 1951, when it was established as a degree college with a mission to provide quality education to women. In recognition of its commitment to academic excellence the college was upgraded to a postgraduate institution by the government in 1983. In 2010, this institution was selected amongst 26 best colleges in Punjab to launch a program of BS Honors. It was chosen as sub-campus of the University of Gujrat in 2014. Further cementing its position as a top-tier institution, the university has always been at the forefront for promoting women's education and has played a pivotal role in nurturing students' holistic development by fostering extracurricular activities and sports alongside for education.

In recognition of its outstanding contributions to the field of education, the institution was officially inaugurated as Rawalpindi Women University on April 12, 2019. Since then, the university has continued to provide high-quality education to its students and has grown in capacity and scope, positioning itself as a leading higher education institution in the region. Over the years, the university has been recognized with numerous national and international accolades, strengthening its reputation as a towering institution in the country.

As the university has its origins in an established institution founded in 1951, its distinguished alumni, who have achieved prominence in diverse fields, serve as a testament to the institution's excellence.





VISION

The Rawalpindi Women University aims to promote a robust learning environment with focus on humanitarian norms and cultural values where innovative research blends with effective learning to ensure a contributory role in society.



MISSION

The university aspires to become a seat of academic excellence at the undergraduate and post graduate levels to provide an enabling environment to women and equip them with productive skills for nation-building.



VICE CHANCELLOR'S ACTIVITIES



Prof. Dr. Anila Kamal Receiving Appointment letter as the Vice Chancellor Rawalpindi Women University From Minister of Punjab for Higher Education and IT Information Technology Raja, Yassir Hamayun



Prof. Dr. Anila Kamal Receiving warm welcome at RWU as Vice Chancellor



Prof. Dr. Anila Kamal Joining as Vice Chancellor RWU



Ch. Mohammad Sarwar, Governor Punjab awarding certificate of participation to Prof. Dr. Anila Kamal at Leadership and Management Program , organised by PHEC Lahore



Prof. Dr. Anila Kamal Vice Chancellor RWU Signing an MOU with the University of Gujrat



Prof. Dr. Anila Kamal Vice Chancellor RWU Signing an MOU with Read Pakistan Trust



Vice Chancellor Rawalpindi Women University Prof. Dr. Anila Kamal and Executive Director Iqbal International Institute for Research and Dialogue, IIUI; Dr. Husnul Amin signed an MOU at Iqbal International Institute for Research and Dialogue, Old Campus IIUI



Vice Chancellor, Prof. Dr. Anila Kamal presented the shield to Mr. Murtaza Noor National Coordinator (IUCPSS)



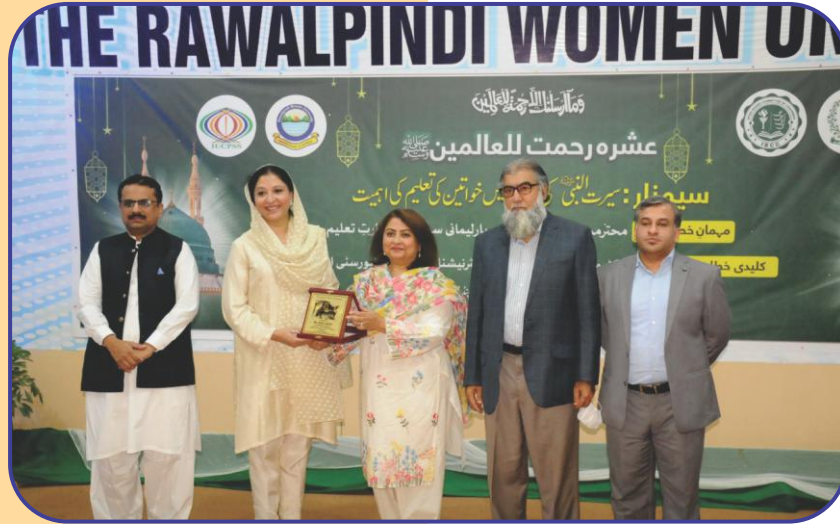
Vice Chancellor, Prof. Dr. Anila Kamal after signing an MOU with Inter-University Consortium for promoting social sciences



Professional Development Training for the Faculty of Social Sciences



Prof. Dr. Anila Kamal vice chancellor RWU presented shield to the Guest of Honor Mr. Talat Mehmood Awan Vice President, Rawalpindi Chamber of Commerce and Industry at 1st job fair (RWU)



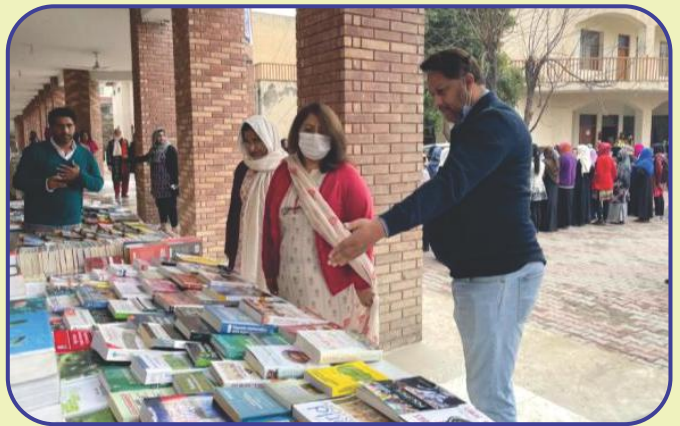
Ms. Wajiha Qamar, Parliamentary Secretary for Ministry of Federal Education and Professional Training at Seminar on Ashra Rehmat ul lilalameen, RWU



Seminar upon the topic of Milad ul Nabi at RWU



Plant Exposition Organized at Rawalpindi Women University



Book Fair Inaugurated by MPA Sheikh Rashid Shafique & Prof .Dr Anila Kamal, Vice Chancellor RWU



MPA Seemabia Tahir & Prof Dr Anila Kamal, Vice Chancellor at Awareness Campaign for National Health Card at RWU



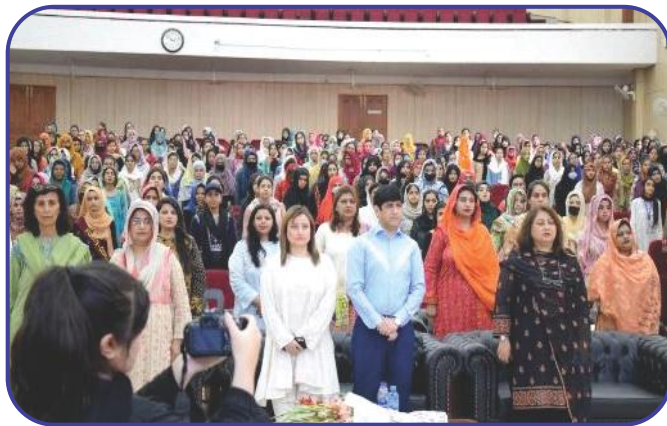
Prof. Dr. Anila Kamal Vice Chancellor RWU leading the awareness campaign of Kashmir day Walk



Prof. Dr. Anila Kamal Vice Chancellor RWU Presenting Shield to the guest of Honor Ms. Maliha Hussain (Gender Expert) at an Awareness Seminar on Women Rights at RWU,



Prof. Dr. Anila Kamal Vice Chancellor RWU Chief guests Mr. Sheikh Rasheed Ahmed and Sheikh Rashid Shafique at inauguration of Sheikh Rasheed block at RWU



Workshop LIVE THE LIFE YOU LOVE
Prof. Dr. Anila Kamal Vice Chancellor RWU Presenting the shield to the
Chief Guest Dr. Imran Yousaf Mental Health Psychologist,
Managing Director of Jofa Group and founder of Transformational International Society



Celebration of Independence Day at RWU

ACADEMIC

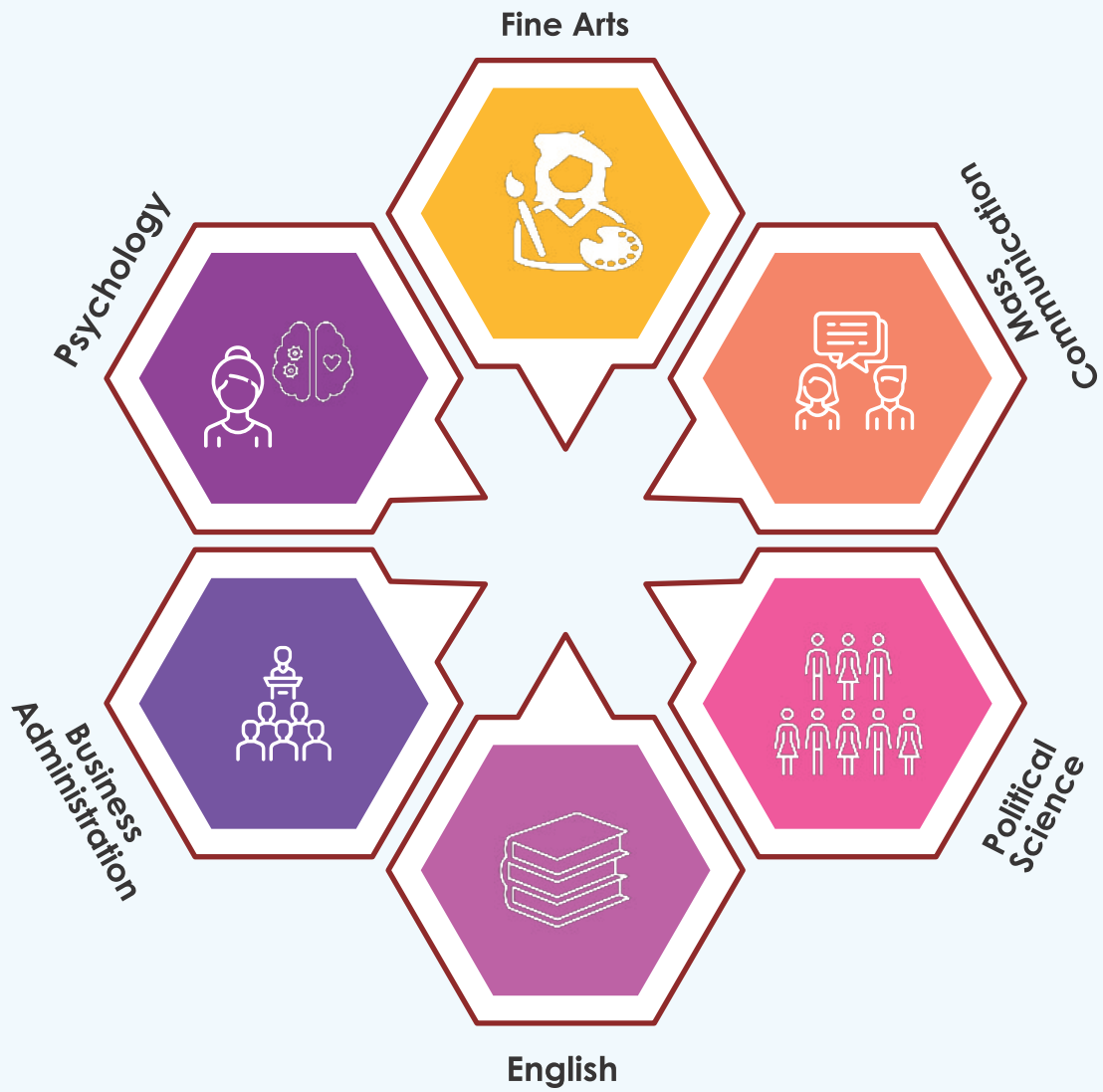
ACTIVITIES

Rawalpindi Women University, although a newly upgraded institution, has a resolute goal of providing the highest quality education to its students. Our mission is to produce young professionals who will become leaders in a variety of fields, including Arts and Humanities, Sciences, Social Sciences, IT/Computer Science, Business and Administrative Sciences. We take great pride in being home to one of the oldest Schools of Art and Design in Pakistan. Our undergraduate programs are designed to guide students in their self-exploration and encourage collaboration with their peers, preparing them to tackle the challenges of practical life.

We are proud to offer 14 BS-Undergraduate degree programs in the Faculty of Science and the Faculty of Humanities and Social Sciences. Our dedicated faculty members work tirelessly to ensure that our programs provide students with a solid foundation in their chosen fields, equipping them with the necessary knowledge and skills to succeed in their future careers.

At RWU, we strongly believe in providing a nurturing and supportive environment that fosters personal growth and development. Our students are encouraged to challenge themselves, to think critically, and explore new ideas. We are committed to helping our students reach their full potential, and we are confident that our graduates will go on to make meaningful contributions to their respective fields.



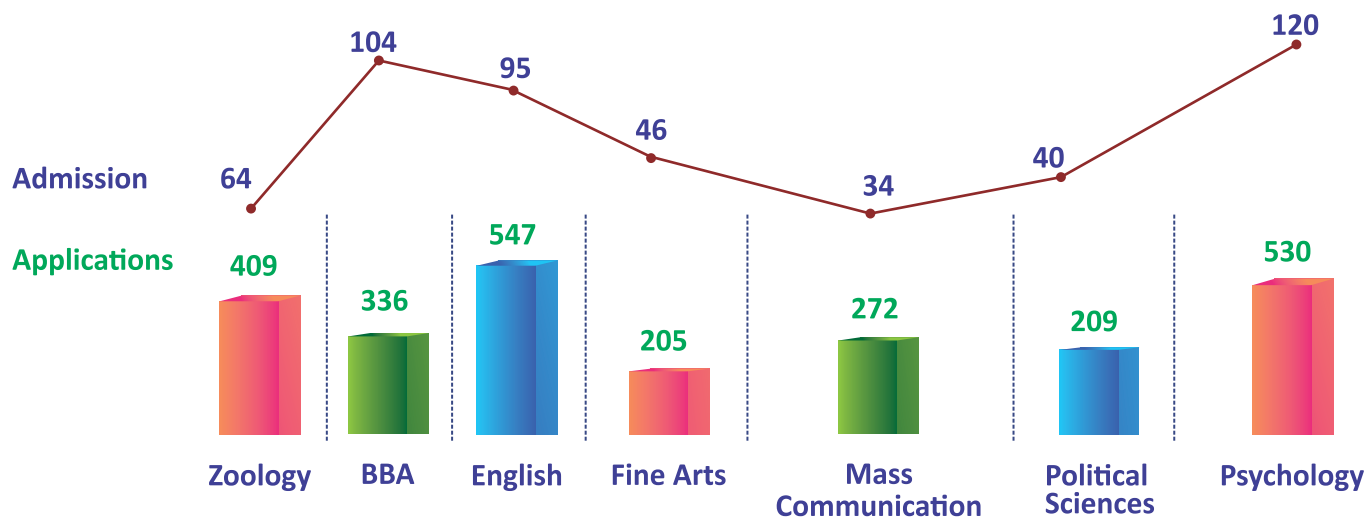
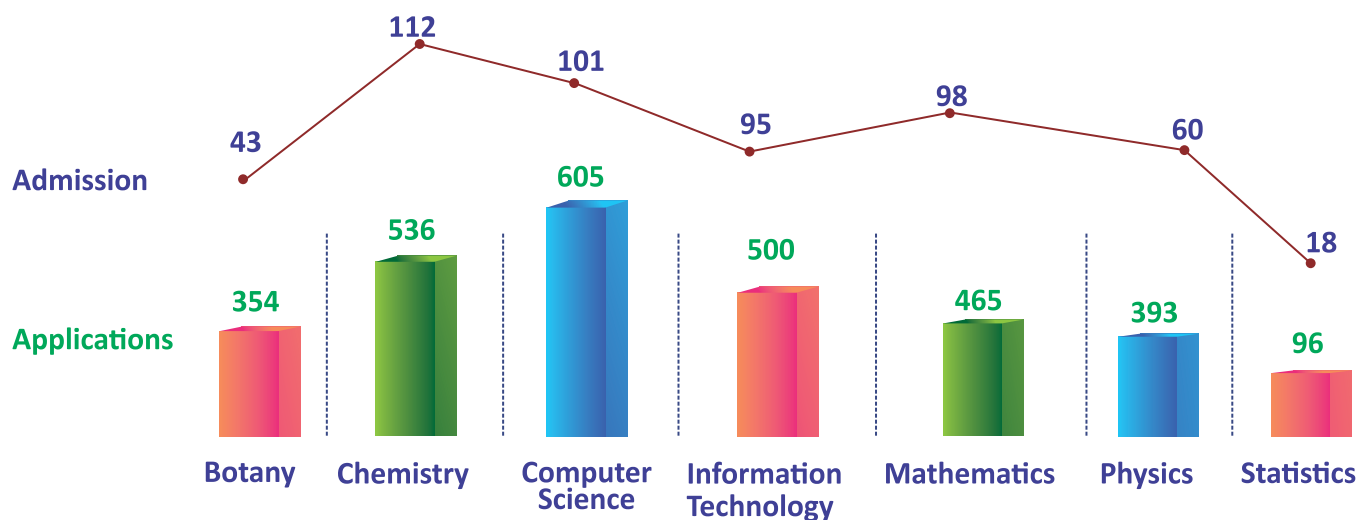


Faculty of Humanities, Social Science

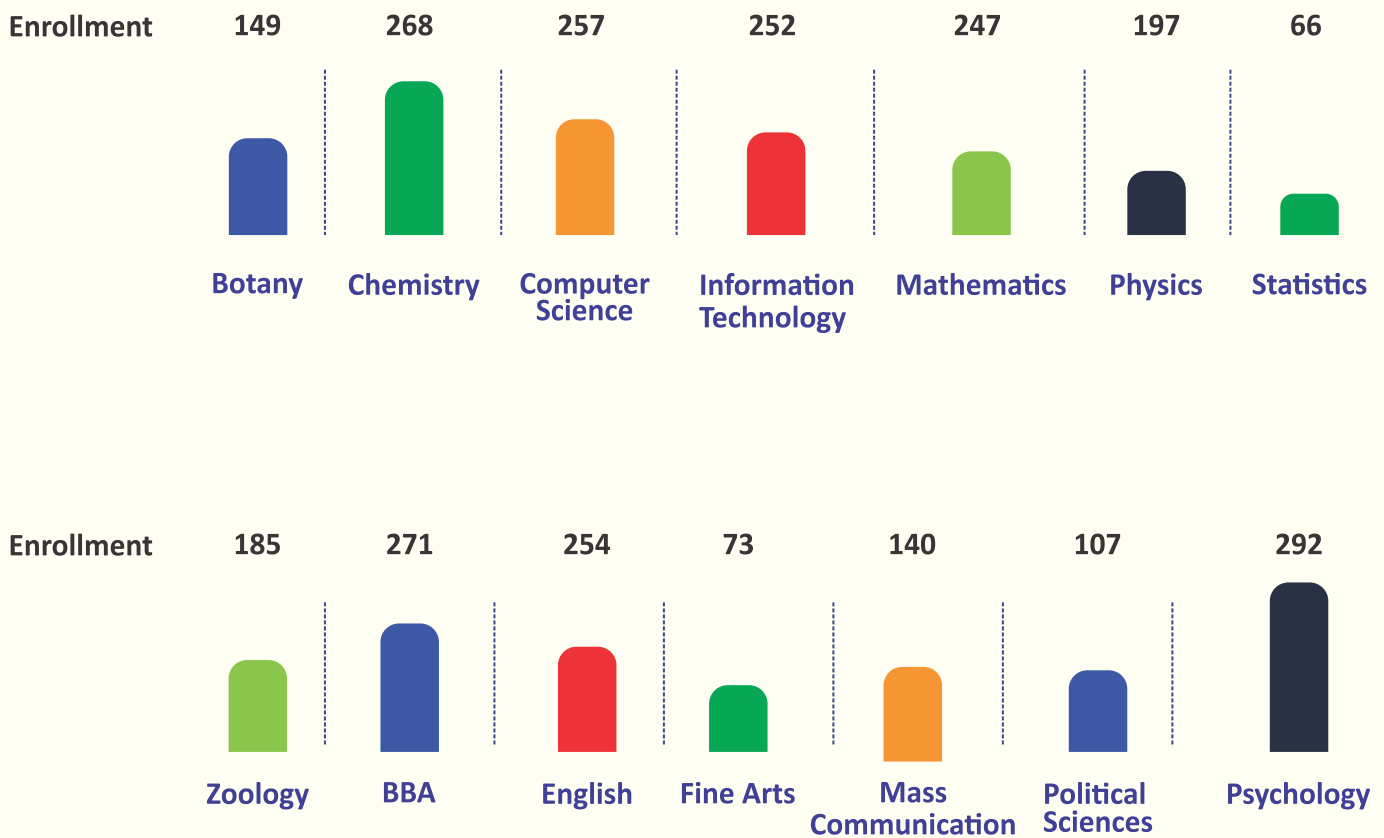
DEPARTMENTAL

STATISTICS

ADMISSION TREND DURING THE YEAR 2021-2022

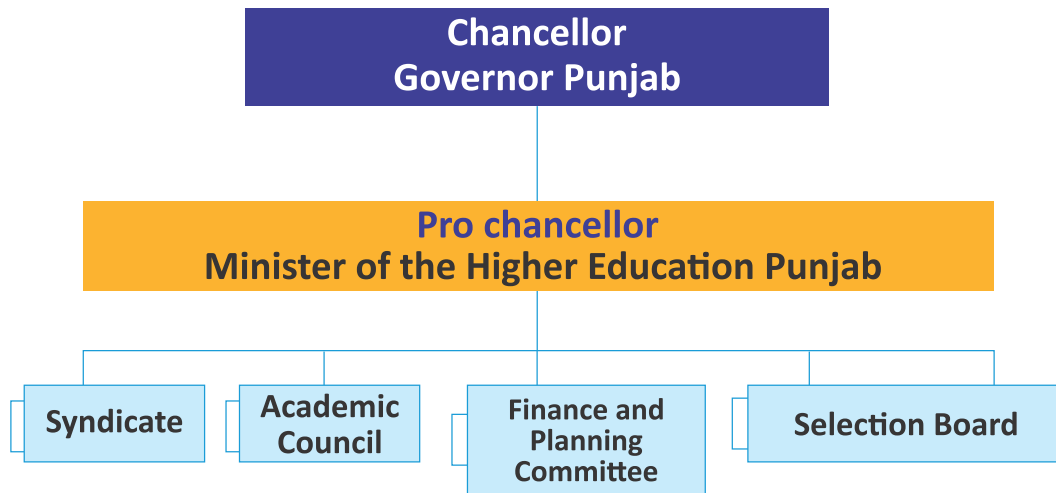


DEPARTMENT-WISE ENROLLED STUDENTS

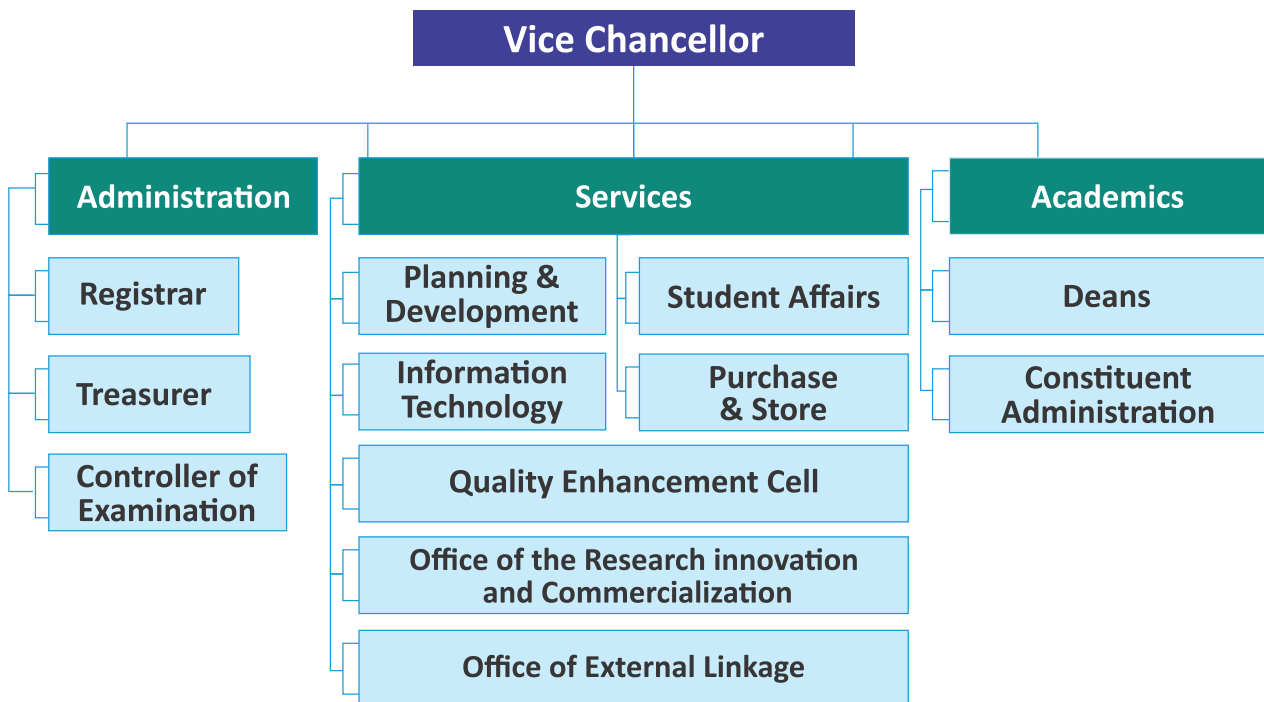


GOVERNANCE STRUCTURE

Governance Structure



Administrative Structure



Development/ Activities of the office of Registrar

The Registrar's office remained involved in the conduct of numerous Academic and Administrative meetings. Two successful meetings of the syndicate have been conducted this year. The office strives to enhance the university in terms of human resources, i.e. faculty, administrative, and support personnel, therefore meetings of the selection committee and selection boards for teaching and non-teaching positions were held throughout the year under the leadership of Prof. Dr. Anila Kamal Vice Chancellor. In order to improve the academic life and quality of education, a board of studies was convened and the concerns which promote research, improvement of the curriculum, etc. were discussed. Following is a brief overview.

University	Name of Statutory/Academic Body Meeting	Meeting Held on
Rawalpindi Women University	3 rd meeting of the Syndicate	29 th July 2021
	4 th meeting of the Syndicate	30 th March 2022
	Meeting of the Finance & Planning Committee	22 nd September 2021
	Meeting of Scrutiny Committee for the Teaching and non Teaching Post	October, November 2021
	Meeting of the Board of Studies (All Disciplines)	November, December 2021
	1 st Selection Board for the non teaching positions	January 2022
	2 nd Selection Board for the teaching positions	May, June 2022

The Syndicate

The syndicate is an executive body of the university. The recommendations of the Academic Council, Finance & Planning Committee as well as Selection Board, are reviewed by the syndicate and decisions have been taken accordingly.

Two meetings of the syndicate i.e., third and fourth were held during the reporting period, wherein various policy decisions were taken on matters related to the academics and administrative functions of the university.

Glimpses from 3rd & 4th meeting of the syndicate



DEPARTMENT OF EXTERNAL LINKAGES

The directorate of external linkages envisions to bridge up the gap between University and the national/international public and private, academic and non-academic organizations by developing linkages through networking and collaborations to uplift the university, students, faculty and administrative personnel. The office seeks to enable the University to build its global footprint with research and academic collaborations at all levels. This is part of an ongoing effort by the worthy Vice Chancellor to improve the university's quality, as well as its national and international links, foreign contacts, and overall worldwide image with the objective to make the university, faculty, students and administrative personnel to be at par with world's developed universities. The department of external linkages is a newly established department at Rawalpindi Women University and became operational in May 2022 .

S. No.	Memorandum of Understanding (MoU)	
	Partner Organization	
1.	Iqbal International Institute for Research and Dialogue	19-05-2022
2.	Inter University Consortium for Promotion of Social Sciences	15-03-2022
3.	PMAS-Arid Agriculture University Rawalpindi	22-02-2022
4.	University of Gujrat	30-12-2021
5.	The Federation of Pakistan Chambers of Commerce & Industry	15-11-2021
6.	Read Pakistan Trust	07-10-2021

QUALITY ENHANCEMENT CELL

Quality Enhancement Cell of the Rawalpindi Women University is committed to maintaining exceptional levels of learning, pedagogy, and research for the betterment of its students. The primary focus of QEC is to arrange the quality of academic instruction, procedures, academic programmes, and policies for graduates who possess the skills and knowledge required to excel in their professional careers while remaining ethically and socially conscious.

QEC recognize the importance of producing graduates who are not only highly talented but also have a deep sense of responsibility towards their communities and society at large. Through our QEC, we are dedicated to providing our students with the resources, support, and guidance necessary to achieve their full potential and become leaders in their chosen fields.

"Quality is not act. It is a habit."

Aristotle

Activities

The Quality Enhancement Cell (QEC) works in close collaboration with both internal and external partners to achieve its objectives of quality enhancement and assurance. As part of our ongoing efforts in this regard, we are pleased to announce the successful submission of our first annual performance report to the Higher Education Commission (HEC) for the year 2021-2022. QEC office has been engaged actively with internal stakeholders to gather data from multiple departments and offices, which was suitably cleansed and compiled according to the formats of HEC. Relevant offices were also being requested to provide evidence for distribution to HEC.

QEC launched the process of self-assessment reports (SAR) and surveys analyzing teacher performance and student satisfaction. We are dedicated to continually improve our educational practices and processes, and these assessments will provide us with valuable insights and feedback that we can use to further enhance the quality of education we provide to our students.

Training for Capacity Building

The Quality Enhancement Cell (QEC) has made it a regular practice to conduct training and workshops for faculty members and academic leaders to enhance their knowledge and understanding of various aspects of quality mechanisms and procedures. These training sessions cover a broad range of topics, such as assessment and evaluation mechanisms, course codes, and preparation of self-assessment reports. Our goal is to provide faculty members with the tools and skills they need to maintain the highest standards of quality in their respective fields and to ensure that our students receive an education that meets the highest standards of excellence.

RESEARCH & DEVELOPMENT

Office of the Research Innovation & Commercialization

The Office of Research, Innovation & Commercialization (ORIC) is operational at Rawalpindi Women University (RWU). The ORIC RWU is working according to the guidelines of the Higher Education Commission (HEC) for all universities/DAIs of Pakistan to establish “Offices of Research, Innovation & Commercialization (ORIC)”. As technological advancements have become increasingly cutting-edge and emerging industries have become more high-tech universities have occupied the central stage in the process of new inventions, novel innovations and commercialization of end products. Universities have become more entrepreneurial and targeting the technology transfer to non-traditional fields, which creates the need for an alternative conceptualization of technology transfer that is more accurate, economical and community-oriented than the conventional models. The ORIC delivers end-to-end services in all matters of research and development, innovation, inventions, commercialization, intellectual property, national and international collaborations, conduction of seminars/symposia/ conferences/ training & awareness workshops, matters related to research publication, honorariums etc. Specifically, the ORIC serves as the focal point for all research-related activities of the University by facilitating the university researchers to promote their research work both on national and international platforms.



Diagram showing functions of ORIC

Research & Development: An overview

Presently, the Rawalpindi Women University is mostly engaged in BS-level undergraduate programmes and emphasizes on teaching excellence. To foster research culture at RWU, the faculty of Rawalpindi Women University is continually trying to mediate with national and international academics and researchers. The faculty has published the following articles in international journals during the academic year 2021-2022.

S. No.	Author	Publication Title	Co-Authors	Journal Name
01	Dr. Anila Kamal	Effect of Exposure to Media Images on Self-Esteem, Body Esteem, and Body Image Anxiety of College Students in Pakistan	Maria Muzaffar, Ayesha Khan, Anila Kamal	Iranian Journal of Psychiatry and Clinical Psychology
02	Dr. Anila Kamal	Exploring the alternative model of personality disorders (AMPD) in a sample of convicts in Pakistan	Nimrah Ishfaq, Anila Kamal	Testing, Psychometrics, Methodology in Applied Psychology
03	Dr. Anila Kamal	Mediating role of deep and surface acting between display rules and job satisfaction among customer services representatives.	Adnan Adil, Anila Kamal, Ghulam Ishaq	Organizational Psychology
04	Dr. Anila Kamal	Association Between General Trauma and Comorbid Psychiatric Symptoms Among Female Convicts.	Nimrah Ishfaq & Anila Kamal	Journal of Loss and Trauma
05	Dr. Anila Kamal	Role of Education in Criminal Thinking among Convicts in Southern Punjab, Pakistan	Nimrah Ishfaq & Anila Kamal	Psychology And Education
06	Dr. Anila Kamal	Reverse culture shock, distress symptoms and psychological well-being of fresh foreign degree holders in Pakistan	Mubeen Akhtar, Anila Kamal, Sara Imtiaz, Aliya A. Hayee	Journal of Community Psychology (JCOP)

S. No.	Author	Publication Title	Co-Authors	Journal Name
07	Dr. Abaid Ullah Yousaf	Testing the heterogeneous effect of air transport intensity on CO2 emissions in G20 countries: An advanced empirical analysis	Habib, Y., Xia, E., Hashmi, S. H., & Yousaf, A. U.	Environmental Science and Pollution Research
08	Dr. Mehwish Rashid	Influence of Leadership in covid 19 environment at employee motivation and OCB in public university of Pakistan.	Mehwish, Rashid, Shafiq & Asma.	Public value & administrative Insight
09	Dr. Mehwish Rashid	Open innovation as mediation between blue ocean strategy & org performance, using structural equation modeling.	Shafiq, Mehwish, Tasmin & Ahmad	Public value & administrative Insight
10	Dr. Fozia Bibi	Indigenous knowledge and quantitative ethnobotany of the Tanawal area, Lesser Western Himalayas, Pakistan	Fozia Bibi, Zaheer Abbas, Nidaa Harun, Bushra Perveen, Rainer W. Bussmann	PLOS ONE
11	Dr. Fozia Bibi	Potential of algae-derived bioactive molecules for cure of SARS-CoV-2	Afroz Alam, Fozia Bibi, Kanishka Porwal	Annals of Phytomedicine

S. No.	Author	Publication Title	Co-Authors	Journal Name
12	Dr. Fozia Bibi	An ethnobotanical study of medicinal plants used to treat skin diseases by the native communities of Murree, Pakistan	Husna Arshad, Bushra Parveen, Riffat Batool, Fozia Bibi, Nidaa Harun, Kaneez Fatima, Darima Habib,	Biomedical Letters
13	Dr. Fozia Bibi	Light and scanning electron microscopic imaging of leaf transverse sections of indigenous fodder grasses of central Punjab, Pakistan	Nidaa Harun, Shabnum Shaheen, Mushtaq Ahmad, Fozia Bibi, Kaneez Fatima, Sehrish Ramzan, Hira Bashir	Microscopy Research Technique
14	Dr. Fozia Bibi	Significance of essential oils from Eucalyptus camaldulensis on human health: A literature review	Fozia Bibi, Naila Mukhtar, Nidaa Harun, Fahim Arshad, Riaz Hussain, Shaheed Ullah, Muhammad Nawaz Sindheela, Muhammad Shahid, Shehnaz, Rabeeah Muzaffar	Biomedical Letters
15	Dr. Fozia Bibi	Scanning electron microscopic imaging of palynological metaphors: A case study of family Poaceae taxa	Nidaa Harun, Shabnum Shaheen, Mushtaq Ahmad, Zaheer Abbas, Fozia Bibi, Fahim Arshad	Microscopy Research Technique
16	Dr. Fozia Bibi	Biofortification of Staple Crops to Eradicate Hidden Hunger: A Review	Afroz Alam, Fozia Bibi, Kanchan Deshwal, Aditi Sahariya, Bharadwaj Chellapilla Iwuala Emmanuel	Natural Resources for Human Health

S. No.	Author	Publication Title	Co-Authors	Journal Name
17	Dr. Nasir Mehmood	Evaluation of Pakistani rice cultivars for apparent infection rate against fungal pathogen <i>Pyricularia oryzae</i>	S. Anwaar, N. Jabeen, N. Mehmood, A. Tahir, S. Shafique, S. Ghuffar and M.U. Khalid	Plant Cell Biotechnology and Molecular Biology
18	Dr. Nasir Mehmood	First report of <i>Lasiodiplodia theobromae</i> as causal agent of strawberry dieback in Punjab, Pakistan	N. Mehmood, A. Riaz, I. Hassan, S. Ghuffar, A. Sattar, W. Aurangzeb, S. Azhar	Journal of Plant Pathology
19	Dr. Nasir Mehmood	Pathogen induced transcriptional changes in sumoylation genes of tomato	B. Maqbool, F. M. Wattoo, R. Mehmood, S. Ghuffar, N. Mehmood, W. Abbas, G. Hammad, K. Rashid, M. U. Yasin and H. M. Asadullah	Plant Cell Biotechnology and Molecular Biology
20	Dr. Nasir Mehmood	Identification of <i>Elsinoe ampelina</i> causing anthracnose disease on grapes in Pakistan.	M. Z. Ahmed, S. Ghuffar, G. Irshad, B. Parveen, N. Mehmood, M. U. Yasin, S. Sardar, U. Sabtain, A. Qayyum and Z. Hassan	Plant Cell Biotechnology and Molecular Biology
21	Dr. Bushra Parveen	Pollen morphology and its taxonomic potential in some selected taxa of Caesalpiniaceae observed under light microscopy and scanning electron microscopy	Farhat Ullah, Mushtaq Ahmad, Muhammad Zafar, Bushra Parveen, Shomaila Ashfaq, Saraj Bahadur, Qura-tul-ain Safdar, Luqman Bin Safdar, Fakhre Alam, Muhammad Luqman	Microscopy research and techniques

S. No.	Author	Publication Title	Co-Authors	Journal Name
22	Dr. M. Tariq Javid	Varied Morphological Study of Albite Nanomaterials at Low Temperature with Co-effect of Single Walled Nanotubes and Graphene oxide for Kevlar Fabric Strength.	Dilbraiz, A. M., Ahmed, N., Javid, M. T., Zada, A., Wazir, H. U., Ahmed, S	Materials Innovations
23	Dr. Humaira Rashid Khan	Fabrication of Mn–ZnO photoanodes for photoelectrochemical water splitting applications.	Humaira Rashid Khan, Bilal Akram, Muhammad Aamir, Muhammad Azad Malik, Asif Ali Tahir, Muhammad Aziz Choudhary, Javeed Akhtar,	J Mater Sci: Mater Electron
24	Dr. Humaira Rashid Khan	Superior photoelectrochemical performance by antimony-doped ZnO thin films by AACVD approach.	Humaira Rashid Khan, Bilal Akram, Muhammad Aamir, Muhammad Azad Malik, Asif Ali Tahir, Muhammad Aziz Choudhary, Javeed Akhtar	Bulletin of Materials Science
25	Dr. Humaira Rashid Khan	Synthesis of Nanostructures of Iron Binary/Ternary Phased Sulfide/Selenide by Hot Injection Method and Case Study for The Removal of Carcinogenic Dye Red S3B Via Photocatalysis.	Rehana Akram, Javeed Akhtar, Humaira Rashid Khan, Mohammad Azad Malik, Neerish Revaprasadu, Yousef AlGhamdi, Moazzam H. Bhatti	Research Square

S. No.	Author	Publication Title	Co-Authors	Journal Name
26	Dr. Sadia Batool	A phosphaphenanthrene-containing vanillin derivative as co-curing agent for flame-retardant and antibacterial epoxy thermoset.	H. Nabipour, X. Wang., S. Batool., L. Song., Y. Hu.	Polymer
27	Dr. Sadia Batool	Chemical surface modification of hydroxyapatite for biomedical application: a review.	Nabipour, H., Batool, S., & Hu, Y.	Emergent Materials
28	Dr. Sadia Batool	Fully bio-based epoxy resin derived from vanillin with flame retardancy and degradability.	H. Nabipour, H. Niu., X. Wang., S. Batool., & Y. Hu	Reactive and Functional Polymers
29	Dr. Sadia Batool	Pectin-coated baclofen-layered zinc hydroxide nanohybrid as a bio-based nanocomposite carrier for the oral delivery.	H. Nabipour, S. Batool., & Y. Hu, Y.	IEEE Transactions on Nanobioscience
30	Dr. Sadia Batool	Chitin based multi-layered coatings with flame retardancy an approach to mimic nacre: Synthesis, characterization and mechanical properties.	S. Batool., W. Guo., R. Gill., W. Xin., & Hu, Y.	Carbohydrate Polymers
31	Dr. Jaweria Shamshad	Removal of Heavy Metals from Wastewater Using Novel Polydopamine-Modified CNTs-Based Composite Membranes.	Altaf, F., Ahmed, S., Usman, M., Batool, T., Shamshad, J., Bocchetta, P., & Batool, R.	Processes

S. No.	Author	Publication Title	Co-Authors	Journal Name
32	Dr. Jaweria Shamshad	Ground water toxicity due to fluoride contamination in Southwestern Lahore, Punjab, Pakistan.	Yasar, A., Javed, T., Kausar, F., Shamshad, J., Hayat Khan, M. U., & Iqbal, R.	Water Supply
33	Dr. Jaweria Shamshad	Fe-zeolite catalyst for ozonation of pulp and paper wastewater for sustainable water resources.	Munir, H. M. S., Feroze, N., Ramzan, N., Sagir, M., Babar, M., Tahir, M. S., & Khoo, K. S	Chemosphere
34	Dr. Kaleem ur Rehman	Multiple-stimuli-responsiveness and conformational inversion of smart supramolecular nanoparticles assembled from spin labeled amphiphilic random copolymers	Md Alim uddin, Haojie Yu, Li Wang, Kaleem ur Rehman Naveed, Bilal ul Amin, Shahid Mehmood, Fazal Haq, Ahsan Nazir, Tenqfei Lin, Xiang Chen, Zhipeng Ni.	Journal of Colloid and Interface Science
35	Dr. Kaleem ur Rehman	Synthesis of AgNWs Using High Molecular Weight PVP As a Capping Agent and Their Application in Conductive Thin	Shah Fahad, Haojie Yu, Li Wang, Yang Wang, Tengfei Lin, Bilal Ul Amin, KaleemUr-Rahman Naveed, Rizwan Ullah Khan, Sahid Mehmood, Fazal Haq, Yusheng Xing & Muhammad Usman	Journal of Materials Science
36	Dr. Kaleem ur Rehman	Synthesis of poly(2-(methacryloyloxy) ethyl ferrocene carboxylate-co-glycidyl methacrylic acid)s and their anti-migration and burning rate catalytic properties	Muhammad Usman, Haojie Yu, Li Wang, Salam Titinchi, Amin Khan, Kaleem-urRehman Naveed, Ahsan Nazir, Tarig Elshaarani, Shah Fahad & Bilal ul Amin	Journal of Thermal Analysis and Calorimetry

S. No.	Author	Publication Title	Co-Authors	Journal Name
37	Dr. Hamid Aziz	Synthesis, characterization, antimicrobial, antioxidant and computational evaluation of N-acyl-morpholine-4-carbothioamides.	Aziz, H., Saeed, A., Khan, M. A., Afridi, S., & Jabeen, F	Molecular diversity,
38	Dr. Hamid Aziz	Synthesis, characterization, alkaline phosphatase inhibition assay and molecular modeling studies of 1-benzylidene-2-(4-tert-butylthiazol-2-yl) hydrazines.	Aziz, H., Mahmood, A., Zaib, S., Saeed, A., El-Seedi, H. R., Pelletier, J., & Iqbal, J.	Journal of Biomolecular Structure and Dynamics
39	Dr. Hamid Aziz	Synthesis, characterization, in vitro biological and computational evaluation of 5-benzyl-4-(benzylideneamino)-2H-1,2,4-triazole-3(4H)-thiones.	Aziz, H., Saeed, A., Rehman, A. U., Jabeen, F., Nasir, B., Khan, A. U., & Khan, I. U	Journal of the Iranian Chemical Society
40	Dr. Hamid Aziz	Synthesis, characterization, in vitro biological and molecular docking evaluation of N,N'-(ethane-1,2-diyl) bis (benzamides).	Aziz, H., Saeed, A., Jabeen, F., Ullah, N., & Rehman, A. U	Journal of the Iranian Chemical Society
41	Dr. Hamid Aziz	Synthesis, characterization, biological and docking simulations of 4-(Benzylideneamino) Benzoic Acids.	Aziz, H., Saeed, A., Jabeen, Basit A., Qureshi I. Z. A., Aziz A., Haroon A., & Rehman I. U	Chinese Journal of Structural Chemistry

S. No.	Author	Publication Title	Co-Authors	Journal Name
42	Dr. Zunaira Habib	Nanowaste: Another Future Waste, Its Sources, Release Mechanism, and Removal Strategies in the Environment.	Zahra, Z., Habib, Z., Hyun, S., & Sajid, M.	Sustainability
43	Dr. Zunaira Habib	Performance evaluation and substrate removal kinetics in a thermophilic anaerobic moving bed biofilm reactor for starch degradation.	Shahzad, H. M. A., Khan, S. J., & Habib, Z.	Water Practice & Technology
44	Dr. Zunaira Habib	Evaluating the performance of anaerobic moving bed bioreactor and upflow anaerobic hybrid reactor for treating textile desizing wastewater.	Shahzad, H. M. A., Khan, S. J., Jamal, Y., & Habib, Z	Biochemical Engineering Journal
45	Dr. Mamoona Khan	Metamorphosis of Aesthetic Visual Culture, An Aftermath of War	Mamoona Khan	Perrineal Journal of History
46	Dr. Mamoona Khan	Ashlars Masonry in Puthuhar and the Colonial Era, A Study of the Monumental Edifices	Mamoona Khan	Pakistan Heritage
47	Dr. M. Shoaib	Judd-Ofelt and luminescence properties of Pr ³⁺ doped ZnO-Gd ₂ O ₃ /GdF ₃ -BaO-P ₂ O ₃ glasses for visible and NIR applications	Shoaib, M., Khan, I., Rooh, G., Wabaidur, S. M., Islam, M. A., Chanthima, N., & Kaewkhao, J.	Journal of Luminescence

S. No.	Author	Publication Title	Co-Authors	Journal Name
48	Dr. M. Shoaib	Spectroscopic investigation of Sm ₂ O ₃ -activated barium calcium strontium borate glasses for laser and display-devices applications.	Khan, I., Shoaib, M., Srisittipokakun, N., Ullah, I., Ahad, A., Kothan, S., & Kaewkhao, J.	Optik
49	Dr. M. Shoaib	Photoluminescence and optical transition properties of Sm ³⁺ activated lead-borate glasses.	Mukamil, S., Sarumaha, C., Wabaidur, S. M., Islam, M. A., Khattak, S. A., Kothan, S. & Rooh, G.	Optical Materials
50	Dr. Fouzia BiBi	The Power Projection of Turkey in Middle East: (From 2000-2020)	Fouzia Bibi and Abida Yousaf	Global Foreign Policies Review
51	Dr. Fouzia BiBi	Global Warming Challenges and Tactical Ramfications: Addressing Ecological Security Concerns	Syed Muhammad Ali Shah, Shaheen Akhtar, and Fozia Bibi	Margalla Papers
52	Dr. Naila Erum	Does higher innovation intensity matter for abating the climate crisis in the presence of economic complexities? Evidence from Global Panel Data	Adedoyin, Festus Fatai, Naila Erum, and Ilhan Ozturk	Technological Forecasting and Social Change
53	Dr. Naila Erum	Green Growth, Economic Development, and Carbon Dioxide Emissions: An Evaluation Based on Cointegration and Vector Error Correction Models	Sun, Yu, Mingxing Li, Hongzheng Sun, Shahida Kanwel, Mengjuan Zhang, Naila Erum, and Abid Hussain	Energies
54	Dr Naila Erum	Revisiting Environmental Kuznets Curve in Relation to Economic Development and Energy Carbon Emission Efficiency: Evidence from Suzhou, China.	Wen, Ming, Mingxing Li, Naila Erum, Abid Hussain, Haoyang Xie, and Hira Salah ud din Khan	Energies

S. No.	Author	Publication Title	Co-Authors	Journal Name
55	Dr. Naila Erum	How institutional quality does moderates the impact of tourism on economic growth? Startling evidence from high earners and tourism-dependent economies	Adedoyin, Festus Fatai, Naila Erum, and Festus Victor Bekun	Tourism Economics
56	Dr. Naila Erum	The influence of political and social globalisation on foreign direct investment inflow in developing countries: the role of financial development as a moderating factor	Mohd Rafidi, Marhamah, Jamaliah Said, Naila Erum, and Farha Abdol Ghapar	Asia-Pasific Management Accounting Journal
57	Dr. Naila Erum	An Analysis Of External Debt, Urbanization And Government Size Nexus: Evidence From Pakistan	Naila Erum, Abida YOUSAF, Fiaz HUSSAIN, and Ngozi ADELEYE	International Journal of Management (IJM)
58	Dr. Nida Riaz	Improving Emotional Dysregulation And Well-Being Among Visually Challenged Adolescents: Efficacy Of Acceptance And Commitment Therapy (Act)	Nida Riaz, Hina Irum	Asean Journal of Psychiatry
59	Dr. Sofia Tabassam Cheema	Expectations in Romantic Relations and Psychological Well-Being of Adolescents in Pakistan: Moderating Role of Parental Support	Cheema, S. T., & Malik, J. A	Psychologica Belgica
60	Dr. Sofia Tabassam Cheema	Development and Validation of Romantic Relations Scale for Adolescents (RRS-A)	Cheema, S. T., & Malik, J. A	University Journal of Psychology

S. No.	Author	Publication Title	Co-Authors	Journal Name
61	Dr Shagufta Nighat	Detection of Altered Pattern of Antibiofilm and Biofilm Character in Staphylococcus aureus Isolated From Dairy Milk.	Muhammad Aamir Naseer , Amjad Islam Aqib , Ambreen Ashar, Muhammad Ijaz Saleem, Muhammad Shoab, Muhammad Fakhar-e-Alam Kulyar, Khurram Ashfaq, Zeeshan Ahmad Bhutta and Shagufta Nighat	Pakistan Journal of Zoology
62	Dr. Nosheen Zafeer	Multivariate Diversity Analysis and Systematics of Hemipteran Insects of Family Reduviidae,	Z. Ahmad, M. Naeem, R. Azad, I. Hussain, N. Iqbal, M. Zaman, N. Zafeer, R.O.E.Elgezouly, F. Parvaiz, M. Maqbool, R. Akbar, W. Jaleel, U. Naeem-Ullah, Z. Mahmood, S. Hassan, M.M.Hassan,	Journal of King Saud University- Science
63	Dr. Saira Jamil	Study of Some Morphometric and Meristic Characteristics of Alepes vari (Cuvier, 1833) Collected from Karachi Coast of Pakistan	Noor Hawa, Zubia Masood, Habib Ul Hassan, Ahmed Ezzat Ahmedd, Ayman Swelum, Saira Jamil, Adil Khan	Brazilian Journal of Biology
64	Dr. Saira Jamil	Comparison of Growth Performance and Morphological Variation Among Three Carp Species (Cyprinus carpio, Hypothalmichthys molitrix, and Labeo rohita).	Gul Naz Gul, Zubia Masood, Tasweef Khan, Nasreen, Saira Jamil, Adil Khan	Journal of Freshwater Biology

S. No.	Author	Publication Title	Co-Authors	Journal Name
65	Dr. Ayesha Aslam	Characterization of biofilms produced by Candida species isolated from tertiary care hospitals, Rawalpindi, Pakistan	Ayesha Aslam, Zulfiqar Ali Malik, Naeem Akhtar, Jyotsna Chandra, Kanwal Rafique, Fariha Hasan, Aamer Ikram, Samiullah Khan, Malik Badshah, Mahmood A. Ghannoum, Aamer Ali Shah	International Journal of Biosciences
66	Dr. Saima Jabeen	Regulation of cell signaling pathways by Genistein in different cancer: Progress, Prospects and Pitfalls	Mobeen I, Romero MA, Yulaevna IM, Attar R, Jabeen S, Fayyaz S	Cellular and Molecular Biology
67	Dr. Maria Abdul Salam	Isolation and Identification of Potentially Pathogenic Bacteria from Second Hand Items of Flea Market of District Haripur, Pakistan	Ayub jadoon, Hadia farooq, Maria Abdul Salam, Ayesha ambreen, Nauman Rafi, Muhammad Hamad Akram, Fawad shabir Memon and Ahad Mehmood	Natural Volatiles and Essential Oils
68	Dr. Maria Abdul Salam	Isolation and Characterization of Oil Degrading Bacteria from Soil Contaminated with Used Petroleum Products	Muhammad Farhan Chudhary, Shafiq ur Rehman, Maria Abdul Salam, Mehak Rubab Kazmi, Shumaila Yousaf, Fatima Anjum, Iqra Noor	Tobacco Regulatory Science
69	Dr. Humaira Sawal	Phylogenetic and sequencing analysis of Chikungunya virus (CHIKV) strains from local Pakistani population	HA Sawal, SK Niazi, E Ghani, M Noor	Journal of the Pakistan Medical Association

Research Projects awarded to the faculty of Rawalpindi Women University.

S. No.	Name of the Project	Principal Investigator	Department	Funding Agency/ Amount (Million Rs.)
1	Psychological Risk factors and Challenges for Children in Domestic Labour	Prof. Dr. Anila Kamal	Vice Chancellor	0.92 M, HEC
2	Exploration of protective role of plant mediated nanoparticles as nano-biofungicide against early blight disease of tomato	Dr. Nasir Mehmood	Botany	1 M NAHE, HEC
3	Plant diversity as an aid to digitization in herbarium and botanical garden in Rawalpindi Women University.	Dr. Fozia Bibi	Botany	1 M NAHE, HEC
4	Identification of natural antifungal agents from <i>Eucalyptus camaldulensis</i> dehn for management of Southern Blight disease in bell pepper	Dr. Saira Banaras	Botany	1 M NAHE, HEC
5	Effect of phytochemicals from <i>Bacopa monnieri</i> (L.) Pennell, in Alzheimer's disease	Dr. Rehana Kousar	Botany	1 M NAHE, HEC
6	Noble metal doped rGO-ZnS nanomaterials for photocatalytic degradation of environmental pollutants.	Dr. Hina Naeem	Chemistry	1 M NAHE, HEC
7	Synthesis & Biological evaluation of privileged analyses of Anhydride for anticancer activity	Dr. Tariq	Chemistry	1 M NAHE, HEC

S. No.	Name of the Project	Principal Investigator	Department	Funding Agency/ Amount (Million Rs.)
8	Development and characterization of stable and bioactive formulations against bacterial strains	Dr. Umara Afzal	Chemistry	1 M NAHE, HEC
9	Development of electrochemical sensor for the diagnostics of SARS-CoV-2 (Corona Virus)	Dr. Azeema Munir	Chemistry	1 M NAHE, HEC
10	Plant diversity as an aid to digitization in herbarium and botanical garden in Rawalpindi Women University.	Dr. Suniya Shahzad	Chemistry	1 M NAHE, HEC
11	Synthesis, structural and magnetic study of bismuth-based superconductors	Dr. Attia Firdous	Chemistry	1 M NAHE, HEC
12	Comparative analysis of TORCH infections in pregnant women of rural and urban areas in Rawalpindi, Pakistan	Dr. Saira Jamil	Zoology	1 M NAHE, HEC
13	To determine the de novo pathogenic variants in autosomal recessive disorders and their association with phenotype	Dr. Humaira Aziz Sawal	Zoology	1 M NAHE, HEC

**STRENGTHENING TECHNOLOGICAL
INFRASTRUCTURE**

DIRECTORATE OF INFORMATION TECHNOLOGY SERVICES

The Directorate of Information Technology Services is committed to delivering a strategic advantage to Rawalpindi Women University by fostering creative and innovative use of technology to achieve the University's objectives. The directorate promotes effective stewardship of information assets and provides a secure, highly reliable infrastructure of technology along with high-quality, customer oriented services and support, so as to meet the ever-changing needs of RWU.

1. Intranet/ Local Area Network connectivity

The Directorate of has extended the services to its users by connecting the different buildings through Optic Fiber cable. Further technical team had enhanced the campus fiber backbone to provide connectivity to the different departments and ensure a robust network connection for students in these buildings. Transitioned several backbone fiber optic connections to enhance redundancy to prepare for future building projects.

2. Internet connectivity services

The Directorate of IT Services is providing high-speed, secure and reliable internet connectivity to faculty, administrative staff and students. A total of 100+ Mbps dedicated bandwidth is obtained for the purpose with a backup link to provide a secure and highly reliable technical infrastructure for the campus community with a focus on meeting their ever-changing needs and expectations within minimum costs.

3. Wi-Fi blanket coverage

Facility of wireless internet access throughout the campus is extended to all the administrative and academic departments of university. The coverage has been enabled after the deployment of 25 indoor Wi-Fi, 6 enabled Access Points managed through controller and firewall. The coverage has capability to accommodate 4,500+ concurrent and it can further be extended, as per the requirements.

4. IT resources, support & maintenance services

IT Support Services are to be provide at a high quality, customer-oriented technical environment that supports the instructional, research and business needs of the university community. Technology Support Services serve as the single point of contact for coordination and resolution of all university technology support requests.

Following services were provided during this year

- Resolution of complaints of from users
- Instalation of new software and hardware
- Procurement of hardware supplies
- Asset management of IT inventory
- 120 systems are being issued to administrative and academic departments
- 35 printers are being provided to administrative and academic departments
- 19 laptops are being issued to the officials
- 20 Multimedia projectors are being installed in various departments
- Backup & recovery of digital assets
- Installed and configured new printers, photo and other equipment
- Repairing of hardware System for faculty
- Support in online meetings (Syndicate, Finance and Planning etc.)

The IT department is responsible for the maintenance and up-gradation of hardware and software including enterprise applications to ensure that the latest technology is available to all users at the university. This includes regular maintenance to reduce the possibility of any unscheduled IT infrastructure downtime.

The department implements the maintenance schedule of all equipment and facilities including routine inspections, cleaning, minor repairs, and adjustments where required. These preventative measures are essential to prolong the life of the equipment and the smooth running of everyday affairs at the university.

The department is also responsible for unscheduled emergency and corrective maintenance procedures which helps to remove obstacles, fixes any bugs/faults and keeps the system operational and adaptive.

5. Computer labs and E - Classroom for Students

University has established state-of-the-art computer labs equipped with latest equipment and installed with genuine software. University has extended computer lab facilities to support the academic, research and instructional activities of the university. The resources provided are intended for the sole use of university faculty, staff, students, and authorized users. There are five general and special purpose computing labs containing 250+ PCs. These labs are available from 08:00 AM to 04:00 PM throughout the week.



The general-purpose labs are equipped with fixed multimedia projectors, electric hanging screens, the latest computing workstations. Lab facilities are supported by onsite lab engineers to resolve any issues that the students face.

6. Smart-classroom for students

Higher Education Commission has established a state-of-the-art Smart Classroom in the university. The classroom is equipped with latest equipment and has its own Learning Management System (LMS). Today there is a wide diversity of telecommunication based tools and educational platforms that are available for students and staff and it is promptly expanding each day. Each educational tool or platform has a very unique potential to play a very important role in the classroom.



These often include the selection, testing, and the efficient embedding of educational tools like the main social networking platforms. Even within the education programs, they can be very unique and challenging. The e-classroom has been skillfully designed and professionally built. Research shows that the new learning environment for both students and faculty is friendly. It helps in breaking down some of the old traditional communication barriers that are often encountered in educational and learning practices in the classroom.

Students like attendance, participation, interacting, and classroom involvement. The newly established Smart Classroom is fully operational and lectures from the remote sites are delivered to the students through interactive boards, lecture recording facility, access online resources etc.

7. Student Information System and online Admission System

Currently university is using an indigenously developed Student Information System (SIS) and online admission system which is providing the ease of access to the students to submit their admission forms from their door step. The web based system facilitates the students in terms of availability of student portal through which enable the student to update their profile, select the courses from offered courses, teachers evaluation, fee record updates, results, attendance record, marks of midterms, assignments & quizzes etc.

8. Data Center

Directorate of Information Technology operates a data centers in the main campus. The Data Center is managed by the highly technical, professional & dedicated team, which provides both facilities of management services and 24/7 monitoring of campus information technology infrastructure and IT services. The Data Center has multi-factor access security, infrastructure monitoring services, redundant utility power feeds, redundant Uninterruptible Power Supplies (UPS), redundant power generation, and redundant cooling capacity. The Data center was designed to have high availability ranges between 99.982 % to 99.995 %.



To facilitate recovery from a disaster in a data center, planning and preparation has been made in advance for a quick and orderly restoration of systems. The intent is to restore operations as rapidly as possible with the latest and most up-to-date data available. Therefore, every system that the university operates is backed up regularly, and backup media is relocated to an off-site storage area.

9. Online classes through LMS

The COVID-19 pandemic created unprecedented challenges for the University community in 2020. Strategic planning, upgrading and implementations over the last several years positioned the Division to react and respond quickly to the needs of students, faculty and staff as they transitioned to an online environment for instruction and telework. Directorate of IT staff, in collaboration with various departments to supply laptops, mobile hotspots, software and other resources/ support. successfully conducted 200+ online lectures of different departments.

10. Turnitin

Directorate of IT Services is also managing the Anti-Plagiarism software and accounts that are used by the researchers to make their research more useful and less plagiarized. IT Services also facilitate the students for checking plagiarism.

11. University Website & content management

This directorate collaborates with the various departments of university to implement overall vision of how the website should look and function. Different departments provide the copy and designed content for the site, then pass it along to the IT team for implementation. Technical team works behind the scenes to write the code, test the functionality of the webpages and assist with any user experience issues. Below functions are being performed by the website management team:

- Configure website layout
- Write & implement website code
- Test the site for usability

Currently the technical team is working to upgrade and revamp the website and intends to implement the content management system which will include a new interface for managing campus website.



12. Official Email Services

Email facility is extended to all the faculty, administrative officers/ staff and students in the university domain. Approximately 5,000+ email accounts are being created with the provision of data backup facility.

13. Digital Library Access

The facility of Digital Library through Higher Education Commission is extended to all the administrative staff, faculty members and students to access e-Books and research literature.

LIBRARY

The Library of Rawalpindi Women University is a premier resource for students seeking to expand their knowledge base, improve their academic performance, and gain valuable insights into the professional world. The library boasts an extensive collection of over 32,000 books spanning a diverse range of disciplines, available both on-campus and online.

Moreover, in addition to traditional book lending services, the library offers access to a wealth of research resources, online databases, and computer labs. These resources provide students with an invaluable opportunity to expand their intellectual horizons and explore the latest developments in their respective fields of study.

Furthermore, the library serves as a hub for academic engagement, providing spaces where students, faculty, and staff can gather to collaborate and exchange ideas. Our library works closely with other offices on campus to organize a variety of academic support workshops and events, further enhancing the educational experience of our students.



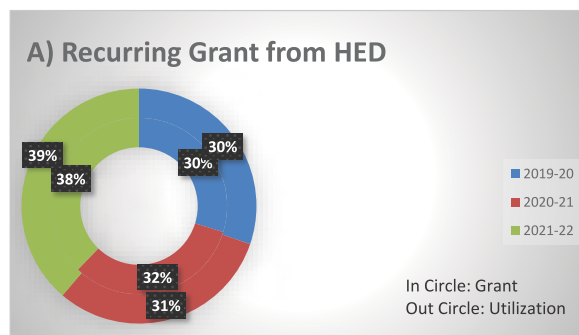
FINANCE AT A GLANCE

Financial Report (2019-20 to 2021-22)

A) Recurring Grant from Higher Education Departments (Government of the Punjab)

(Rupees in million)

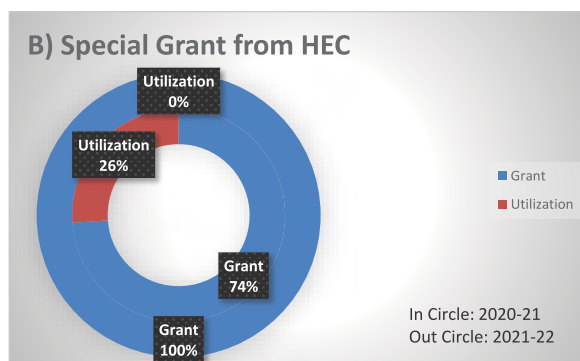
Financial Year	Grant	Utilization
2019-20	258.368	232.557
2020-21	281.249	238.365
2021-22	328.399	297.758



B) Special Grant from Higher Education Commission

(Rupees in million)

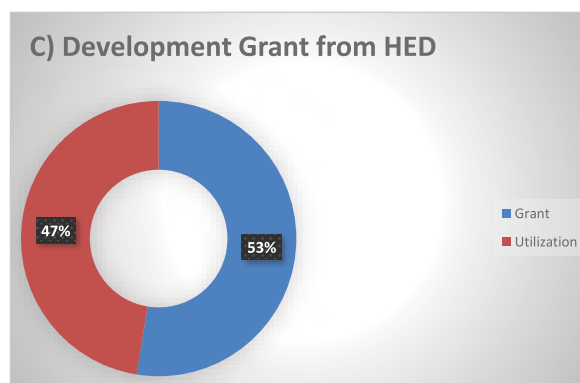
Financial Year	Grant	Utilization
2020-21	42.358	15.000
2021-22	53.900	0



C) Development Grant from Higher Education Departments (Government of the Punjab)

(Rupees in million)

Financial Year	Grant	Utilization
2021-22	386.159	348.446



EVENTS, EXTRA & CO-CURRICULAR ACTIVITIES

A VISIT TO PALESTINE EMBASSY BY THE DELEGATION OF STUDENT COUNCIL RWU

Muslim Institute organized a National Conference on Junahgadh: Prospects and Challenges. Many renowned scholars from the country participated in it. Prof. Dr. Aalia Sohail Khan, former Vice Chancellor Rawalpindi Women University and Dr. Asma Zahoor Associate Professor of English presented a joint paper entitled, "Sifting Facts from Fiction about Junahgadh".



A five-day training workshop for Students of Mass Communication was organized by Women Media Center (WMC) from 2nd to 6th Oct, 2021. Students of Rawalpindi Women University from the Dept. of Mass Communication also participated in the workshop.

A WEBINAR IN CONNECTION WITH THE DEATH ANNIVERSARY OF THE FOUNDER OF PAKISTAN

Students' Council of RWU organized a webinar on 18th September, 2021 in connection with the death anniversary of the founder of Pakistan, our beloved Quaid Mohammad Ali Jinnah. The distinguished guest speaker, Senator, Lt.Gen. Abdul Qayyum, Hilal- I- Imtiaz Military, is a war veteran, a decorated soldier and a seasoned politician. The participants thoroughly enjoyed the session. Their zeal to ask questions in the end was indicative of their appreciation and involvement.

18-September-2021 at 7PM

Webinar

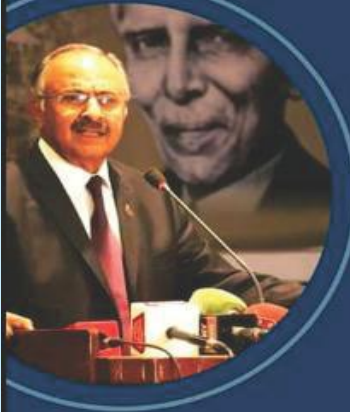
GEN. ABDUL QAYYUM

ON THE TOPIC OF:

QUALITIES OF LEADERSHIP IN QUAID-E-AZAM MUHAMMAD ALI JINNAH

ORGANIZED BY:
STUDENT'S COUNCIL
RAWALPINDI WOMEN
UNIVERSITY

Link To Join:
<https://meet.google.com/dza-cnzi-ybh>



ANTI CORRUPTION CAMPAIGN

The anti corruption campaign 14th December, 2021 has gone well in Rawalpindi Women University in true letter and spirit. In this regard Students' Council organized a seminar in collaboration with Media Club, English Society, Fine Arts Society, Islamic Society and Business and Management Society. Zoubia Manzoor presided over the function while Nayyab Tariq acted as stage secretary. ASP Beenish Fatima was the guest speaker. Her pragmatic promising and eloquent discourse kept a large audience under spell.





SEMINAR

GUEST SPEAKER:
ASP BINISH FATIMA

ASSISTANT SUPERINTENDENT OF POLICE
 IN NEW TOWN CIRCLE RAWALPINDI AS SUB-DIVISIONAL
 POLICE OFFICER

SERVED AS
 SDPO WARIS KHAN
 SDPO CIVIL LINES IN RAWALPINDI
 ADO FC DIPLOMATIC ENCLAVE ISLAMABAD
 ELITE COMMANDO COURSE

VENUE
FATIMA HALL

DATED: 14TH DEC, 2021
TIMING: 11:00 AM

THIS WEBINAR IS BEING
 ARRANGED IN COLLABORATION
 WITH
 BUSINESS & MANAGEMENT SOCIETY,
 MEDIA CLUB, ENGLISH SOCIETY,
 FINE ARTS AND ISLAMIC SOCIETY

ART OF STORYTELLING THROUGH FILMMAKING

Media Club, Rawalpindi Women University organized an interactive session with Mansoor Ahmad, Associate Director of the Astrophysics Project Division, NASA on the "Art of storytelling through filmmaking", on 10 March 2022 During the session, two short films were being shown to the students. The faculty and students gave their feedback on the films and appreciated the artworks.





Plantation Day Celebrated by Department of Zoology (RWU)



Book Fair organized by Department of Zoology (RWU)

PROTECTION OF TRANSGENDER'S RIGHTS AND THEIR ROLE IN IMPROVING THE SOCIETY

Under the auspices of the Department of Mass Communication, Rawalpindi Women University, a seminar was organized on the topic of Protection of Transgender's Rights and Their Role in Improving the Society. The special guest of the seminar was Reem Sharif who is a Trans Rights Activist, Specialist in Transgender's Rights in the Ministry of Human Rights and is performing her duties as Advisor in Project of Protection of Punjab Police. The seminar was attended by a large number of teachers and students from different departments.





Prof. Dr. Anila Kamal Vice Chancellor visiting the Arts Exhibition at RWU



Prof. Dr. Anila Kamal Vice Chancellor and the team lead of E-Rozgar at RWU

JASHN E BAHARAN AT RAWALPINDI WOMEN UNIVERSITY WAS DEDICATED TO PUNJAB CULTURE

This year Jashn i Baharan at Rawalpindi Women University was dedicated to Punjab Culture. Majority of the students were wearing vibrant cultural dresses. The stalls, songs and the cultural show were all in keeping with the theme. Prof. Dr. Anila Kamal Vice Chancellor was the chief guest who cut the ribbon, watched the dramatized folk stories and took a traditional ride in a horse driven Bhuggi around the main ground where stalls were arranged.



KAMYAB JAWAN SPORTS DRIVE

The Athletic Team of RWU participated in Kamyab Jawan Sports Drive on 6th to 9th December, 2021-22 at Pakistan Sports Board with the collaboration of Additional Director Student Service Cell, Dr. Asma Zahoor and Sports In charge Mrs. Nadia Tubasum.



MOUNTAIN DAY

Students of RWU participated in hiking expedition to celebrate Mountain Day organized by Sad para on 11th February, 2022.





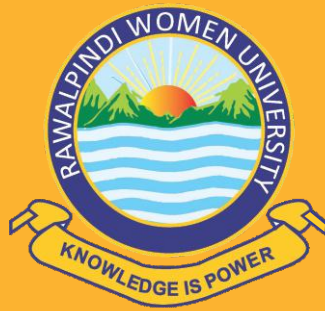
My dear Students

Educating yourself can enhance your personal development and make a meaningful contribution to your family's income. Such efforts can have a positive effect on the national economy.

Prof. Dr. Anila Kamal

ANNUAL REPORT

2021-22



RAWALPINDI WOMEN UNIVERSITY

